

FOR IMMEDIATE RELEASE

Contact: Dan Harrell, The Write Answer for COAST Products
408-813-1897 / dan@writeanswer.biz

Kevin Corcoran, Marketing Communications Manager, COAST Products
503-234-4545 / kevin.corcoran@coastportland.com

New Generation of Rechargeable LED Flashlights from COAST Will Debut at AAPEX Show

Another suite of innovative products from the industry's leading professional LED light manufacturer. See new products in all categories at Booth #1576.

PORTLAND, OR, October 22, 2012 – When the automotive industry asked [COAST Products](#) for a pro-quality, rechargeable flashlight, COAST didn't respond with a knee-jerk, me-too product. Instead, the company followed its commitment to new-product innovation and went back to the drawing board. A “good” rechargeable wasn't good enough; it needed to stand alongside the other outstanding product advances that have made COAST the industry's premier manufacturer of high performance LED lights.

The astounding results of that development will be on display during the Automotive After Products Expo ([AAPEX](#)) – at [Booth #1576](#) from October 30 to November 1 in Las Vegas – as COAST shows retailers, dealers and the media its all-new line of rechargeable LED flashlights for the first time. COAST will also be exhibiting a wide array of new flashlights, headlamps, lanterns, knives and multi-tools.

These products offer advanced levels of quality and innovation, the very latest patented and proprietary features and technology, and are perfect for every retailer and distributor in the automotive industry.

New Rechargeable Flashlights – The Latest and the Completely New

COAST has set out to design and build the best LED flashlights available, just as feature rich and dependable for everyday users as they are for the many law enforcement, military and fire and rescue professionals who praise COAST's products. The new rechargeable A-Series lights have attained that goal.



COAST **A25R** with pop-up USB charging port

Coast Exclusive Dual Power Flex Charging System

Leading the (re)charge are three all-new LED flashlights – the **A25R**, **A22R** and **A9R**. They're encased in tough stainless steel; easy to carry and quick to clean. The A25R and A22R feature COAST's exclusive new Dual Power Flex Charging System – including the ProTek Charging Port, with a tail cap that pops up to reveal a mini USB port for the charging cable to plug into. It's not just extremely cool, there are no parts to lose and the system stays clean from dust and debris.

Lithium rechargeable batteries are included, but the A25R and A22R can run on standard alkaline batteries too. An optional spare lithium battery cartridge, allows users to charge

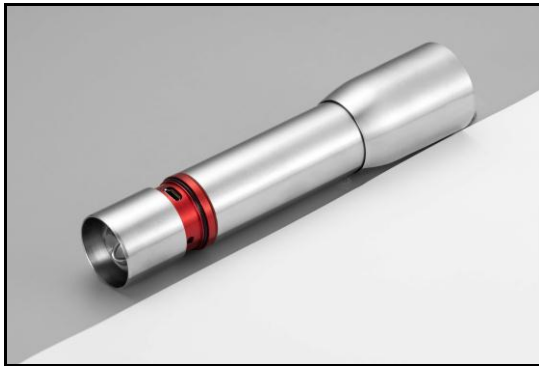
–more–

a spare battery outside the flashlight, so they will always have a fresh battery ready. With these options, COAST provides the most flexible flashlight battery power and recharging system available.

Not Just Brighter – Better

Like most new COAST flashlights, both the A25R and the A22R feature the patent-pending **Pure Beam™ Focusing System** – with proprietary optics that produce a pure, bright consistency across the entire beam; whether it is the tightest spot or widest flood of light. They also have **Fingertip Speed Focus Control™**, another first from COAST that lets users keep one hand free while focusing the flashlight with just a thumb or finger by sliding the front bezel forward or back. The A25R includes the ingenious, COAST-exclusive **Cyclone™ Heat Sink System** that decreases heat buildup, facilitates maximum light output and increases LED lifespan.

The A25R includes the very latest rechargeable lithium ion battery technology, allowing it to produce incredibly powerful light output, estimated at over 400 lumens (final output pending ANSI FL1 testing), while the A22R uses top-of-the-line rechargeable lithium polymer batteries.



COAST **A25R** with exclusive USB charging port



COAST **A22R** rechargeable flashlight

Sleek A9R Completes New Rechargeable Line

The A9R is another unique product making its debut at AAPEX. Like all COAST stainless steel models, rechargeable or not, the A9R is impact and water resistant. It's the perfect pro penlight with a lithium polymer battery and the sophisticated Pro-Flex Charging Cap system that attaches to the back of the unit. It shines a pure white inspection beam in a compact, seven-inch case that is only 3/8-inch in diameter.



COAST **HP2** uses only one AAA battery



COAST **A9R** charging system



COAST **HP3** produces 80 lumens

[Click or Ctrl-Click on images for a high-res photo.]

New Pen-Style Flashlights – Also new for AAPEX are the [HP2](#) and [HP3](#) LED flashlights. The ultra-compact HP2 uses just one AAA battery, but produces 66 lumens of focusable light. Only four inches long, the HP2 offers both a broad flood beam and a focused spot beam using COAST's exclusive Pure Beam Focusing System. The HP3 has the same slim diameter as the HP2, but adds a second AAA battery and has a light output of 80 lumens. At 5.75 inches long, the HP3 is the perfect pen-style light for your shirt pocket, gear bag or tool box. Like the HP2, the HP3 offers Pure Beam Focusing and produces both a broad flood beam and a focused spot beam.

–more–

New LED Headlamps, Area Lanterns, Multi-tools and More

At AAPEX, COAST will also be demonstrating its powerhouse [HP21](#) and [HP7](#) High Performance LED flashlights. The HP21 can light up a football field, with an astounding 1,317 lumens, a range up to 260 meters (850 feet) and high, low and strobe modes – powered with just four D-cell alkaline batteries. The HP21 is the ultimate, compact high performance LED flashlight, the choice when only the best and brightest flashlight will do. The HP7 projects 251 lumens of brilliant light, using just four AAA batteries. It's easy to carry, with the output and runtime that's needed by those who rely on their light every day – it shines up to nearly six hours and has a beam distance of 196 meters (643 feet). And there are many other choices in COAST's complete line of LED flashlights.

Having both hands free *and* bright light on a project is a very good thing. At AAPEX, COAST will be showing its just-released, high-powered **HL8** LED headlamp. Utilizing Pure Beam Focusing and powered by just four AA batteries, the HL8 produces over 300 lumens of brilliant light (final output pending ANSI testing) and has max, high and low outputs modes. It can be focused from a bulls-eye spot to a flood beam, offering the broadest, most consistent beam available. It has a large power switch, an easy-to-grip, focusing bezel and it is hinged to make beam positioning fast and easy. COAST makes a full line of LED headlamps, and emergency LED lights, including the [EAL20](#) lantern that has white light, solid red and flashing red functions. It has 375 lumens, Variable Light Technology for dimming to any light level and provides lighting for up to 80 hours with just four D-cell batteries.



HL8 delivers 300 lumens



Patented **Rapid Response®** [RX312](#) knife

[Click or Ctrl-Click on images for a high-res photo.]



2-LED 150 Pro Pocket Pliers

Award-Winning Multi-Tool – At AAPEX, also be sure to see the [2-LED Pro Pocket](#) multi-tool. Chosen from hundreds of products for a [Popular Mechanics](#) Editor's Choice Award, it is an example of a best-selling retailer staple that COAST has redesigned from top to bottom. Bright LED lights are precisely positioned to light up the very tip of the knife edge and the point of the pliers, making dozens of jobs easier, safer and faster to do.

It's an over-used metaphor to say a product is on the "cutting edge" of innovation. But new [Rapid Response®](#) blade-assist knives from COAST permit the term to apply, both literally and figuratively. These top-quality folders are part of a line-up of premium knives that COAST will exhibit at AAPEX. With patented ease-of-use and safety features – and amazingly affordable prices – these knives set new standards that won't be matched anytime soon.

COAST Products – A History of Innovation

Well-known for their premium knives and multi-tools, over the past decade COAST skyrocketed from zero market share to a market leader in premium LED flashlights by developing innovative products trusted by everyone from the weekend warrior to the Navy Seals and soldiers in Iraq and Afghanistan. COAST's technologically advanced products are safer and easier to use, while at the same time being extremely functional and enjoyable to own. COAST Products was founded as COAST Cutlery Company in 1919. Originally established to provide quality knives to the farmers, ranchers and workers of the Pacific Northwest, today COAST produces premium LED lighting products, including top-rated [flashlights](#), [headlamps](#) and [EAL](#) (emergency area lighting), as well as fine-crafted [knives](#) and world class [multi-tools](#). Every COAST product reflects an investment in skilled craftsmanship and quality materials and is backed by a COAST guarantee. COAST products are available from leading automotive stores and suppliers, outdoor specialty and sporting goods stores, and numerous online retailers. For more information call 800-426-5858 or visit www.coastportland.com.



Follow us at...

– END –